

Green Buoy Block (6" x 7.5")

*Beginner paper foundation piecing skill level
Paper foundation piecing pattern by Karen Kuske
Copyright 2017 by Quilt Patterns & More, LLC

General Instructions (Important to read these before sewing)

This package includes the following:

1. Block Layout
2. Color guide
3. One set of the full size foundation pattern on plain white paper.
4. Basic instructions for paper piecing this block
5. Color photo of the finished block on the 1st page.
6. Finishing features description.

Each foundation piece unit is identified by a letter (A-D), and also has numbers to follow for the sewing order. As you are sewing fabric pieces to the paper foundation, refer to the Block Layout and Color Guide for help in placement.

The Block Layout has the letters (A-D) to refer to the paper foundation units, and numbers referring to the Patch Colors table (page 2) and the sewing order. Use the Block Layout and Patch Colors table as your road map if you can't read the letter on the Foundation Papers after you've stitched it.

Sew all the foundation units separately, then assemble the units together according to the directions. Units which are not pieced (only one fabric) should be basted to the foundation pattern inside the 1/4" seam allowance.

Detailed instructions

Prepare the paper foundation units

Cut out the pattern units (the A, B, C units) on the Foundation Paper staying about 1/4" from their outside line.

Cutting the fabric

When cutting fabric pieces for a single patch, the fabric must be 3/8" larger on all sides than the patch it is to cover; be generous with your cutting – the bigger the better. It will be very frustrating to find that in your effort to save fabric, you cut a patch 1/8" too short and have to rip it out and re sew it.

Directional prints – These work best when cut and pieced so they are placed on the straight of grain. Cut a piece of fabric that covers the patch area plus a 1/2" seam allowance. Place it on your cutting mat right side down and so the straight of grain is parallel to the edges of the foundation. Place the paper foundation unit with the printed side up, on top of the wrong side of the directional fabric. Center the patch of the unit on the fabric piece so that the fabric covers the patch area including a 1/2" seam allowance around all sides of the patch.

Place the edge of a postcard on the line between the previous piece and the patch in which the fabric will be used. The postcard should be covering the patch which needs the directional print. Crease the foundation along the sewing line, folding it over the postcard. Use your Add-a-Quarter (or Add-an-Eighth) ruler on top of the folded foundation and postcard up against the fold. Trim away the excess fabric using your rotary cutter.

As you cut the fabric patches for each unit, stack them together and then pin them to the individual paper foundation units to keep track of them until ready to sew.

Patch Colors to cut from fabric pieces

Patch #	Color	Patch #	Color	Patch #	Color
Unit A		Unit C		Unit D	
1	Green shiney	1	Water	1	Brown
2	Sky	2	Dark green	2	Water
3	Sky	3	Green	3	Water
4	Sky	4	Water	4	Green
		5	Water	5	Dark green
Unit B				6	Water
1	Sky			7	Water
2	Dark green			8	Water
3	Green				
4	Sky				

Sew the fabric to the foundation units using the paper foundation piecing method. Following the Block Layout, join the completed foundation units together by placing right sides together and using a ¼” seam allowance.

Order for sewing units together

Unit A to B	Unit D to A-C	
Unit C to AB		

Remove the foundation paper around the edges of the block. Stay stitch along the outer edge of the block to help keep fabric from stretching out of shape. Remove the remaining foundation paper. Use tweezers to remove small pieces of paper.

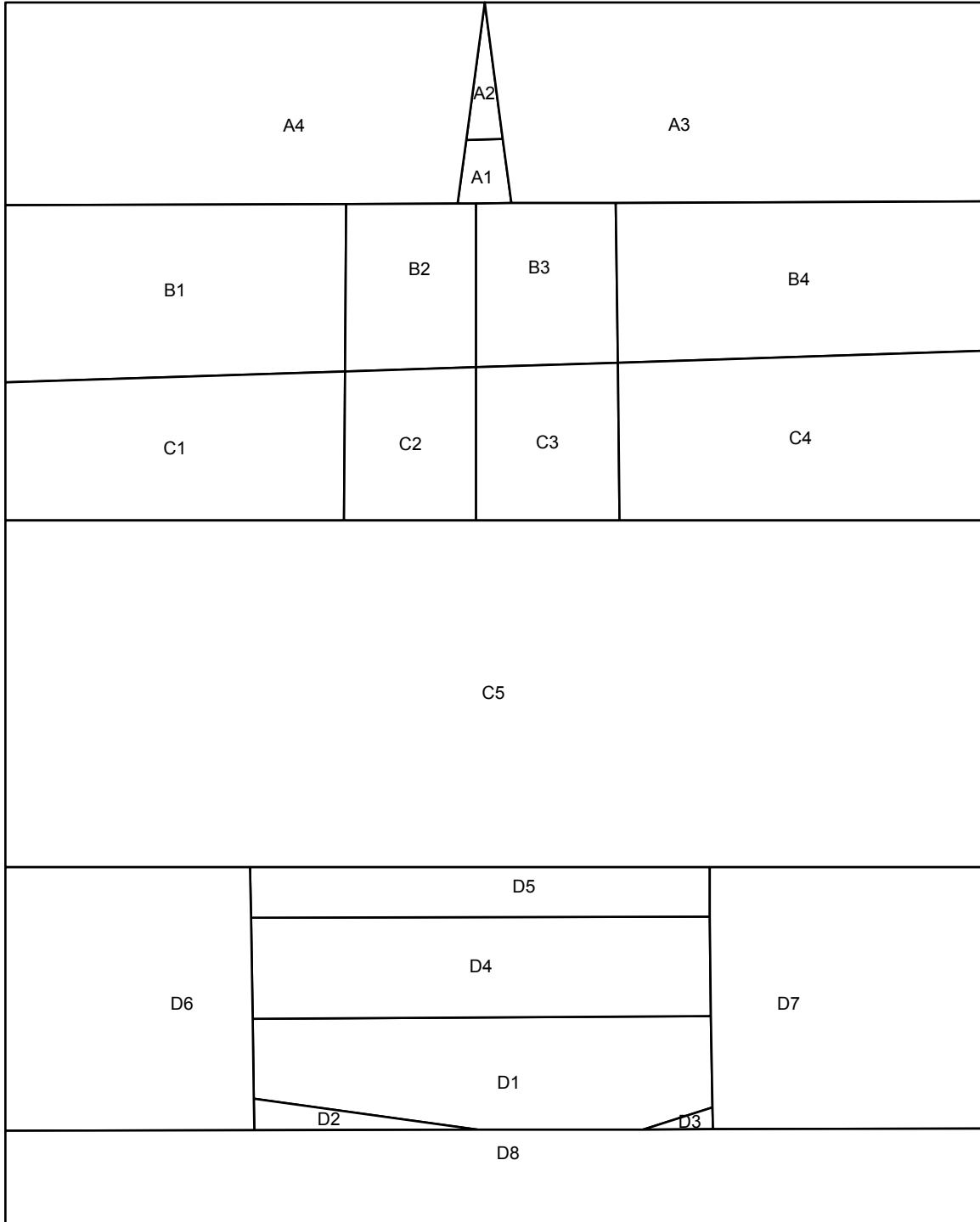
Finishing features – Adhere a piece of medium weight iron-on stabilizer on the backside of the block. Use your sewing machine straight stitch to add the green lines for the buoy frame and the light guard. Refer to the color photo of the finished block for guidance. Use a white fabric marker to add the number “3” on the buoy.

Square-up the block before adding a border or sashing.

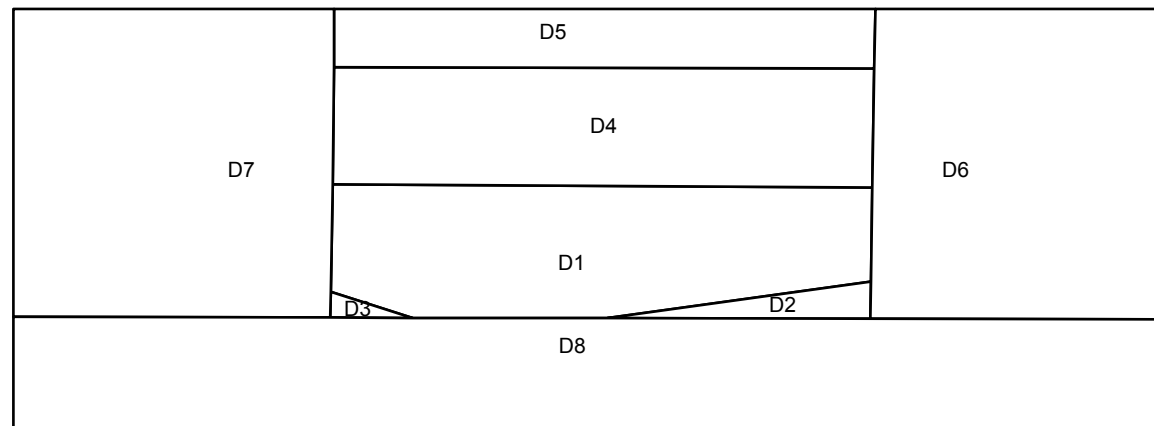
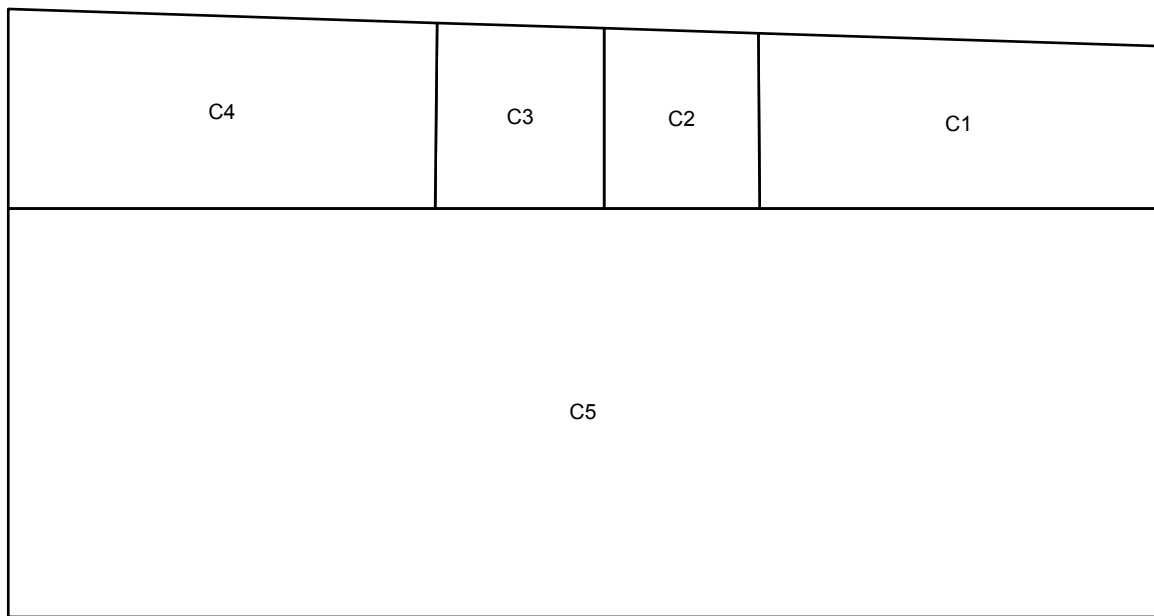
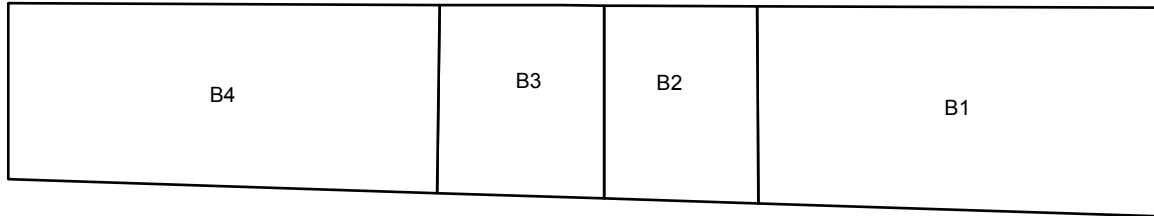
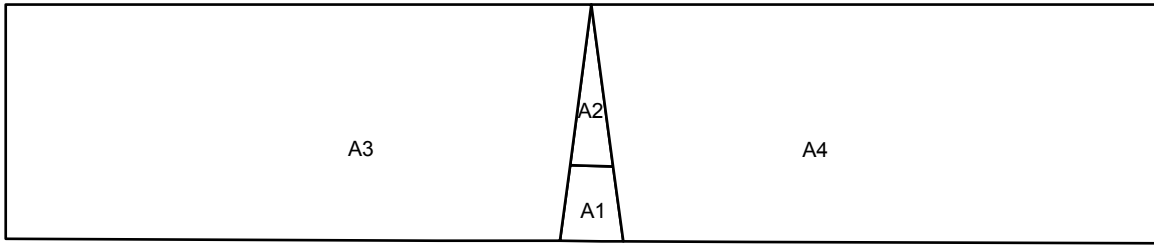
Option 1: Sew border(s) around block as desired.

Option 2: Incorporate this block into a larger quilt along with other blocks.

Green Buoy 6" x 7.5" Block Layout



Green Buoy 6" x 7.5" Pattern



Green Buoy 6" x 7.5" Color Guide

